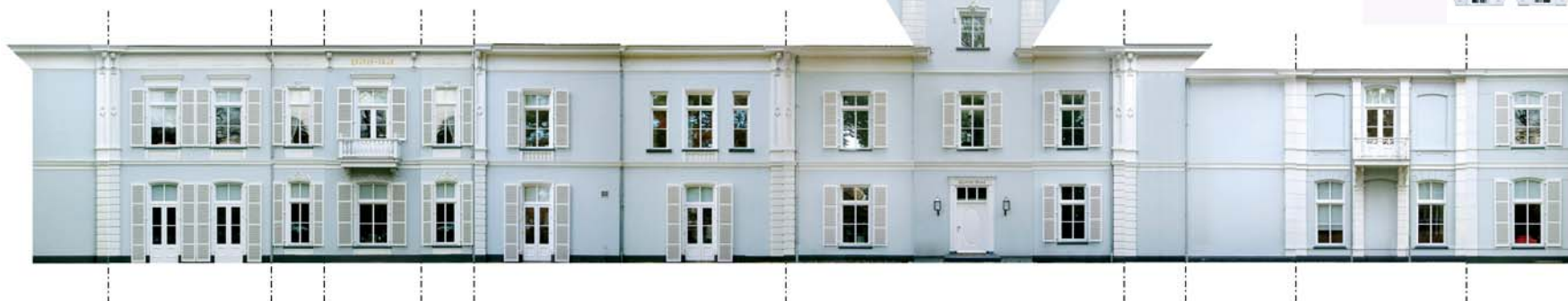
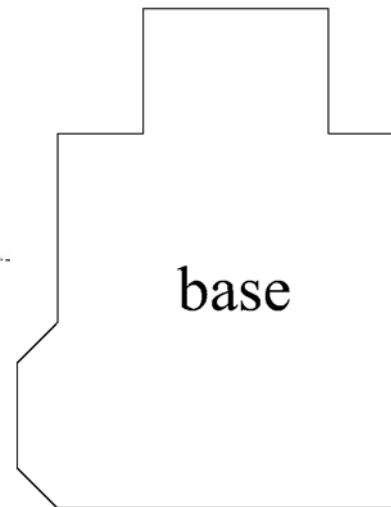
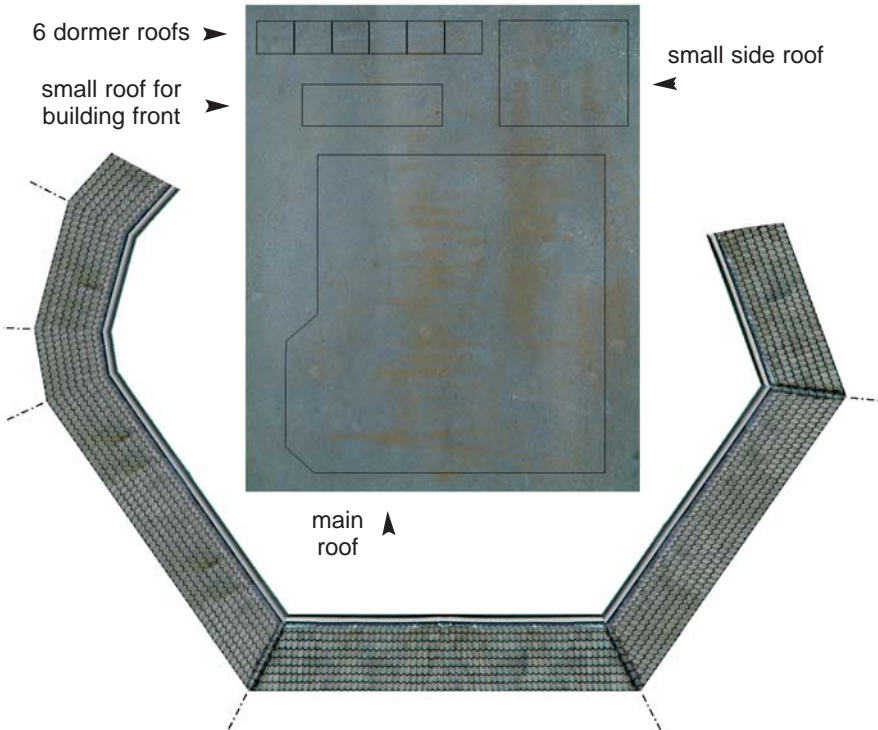
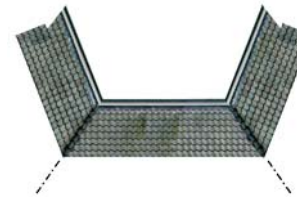


DUTCH "QUATRE-BRAS" BUILDING IN OOSTERBEEK

TIPS FOR THIS PAPER BUILDING:

- Print the file on heavy weight paper (e.g. 125lb. or 200 g/m²) and wait to dry.
- Cut out the building parts with a sharp hobby knife. Use a metal ruler to cut along straight lines.
- Mark the folding lines on the blank sides of the building faces. Use the hobby knife to score the lines.
- Fold the building faces using your fingernail to make the folds sharp. Make the corners square. Fit the building together to see how it looks.
- Cut the base out of cardboard or styrofoam. Glue the base a few millimeters from the bottom edge of the building. The small gap between the base and the bottom of the walls will allow the building to sit in your terrain rather than on top of it.
- Check how the roof fits and fold it accordingly.
- You can glue the roof on top of the walls or leave it unglued so it will be detachable. In that last case use two triangular pieces of cardboard/styrofoam and glue it on the inside of the roof to make it sturdy. The roof should overhang the building slightly, so glue the supports a few millimeters in from each end of the roof.
- Attach chimneys and other details as desired.
- You might want to spray a matt varnish onto the building for protection.



Use to make dormer window sides ▶